



Modular Aluminium Transmission Technology

INDEXING

PARTICULARS	PAGE No.
At a glance	1-2
About us	3
Technical edge	4
Vision & Mission	5
Technical parameters	6
Connection technology	7
Technical assistance	8
Warranty & standard	9
Quality certifications	10
Cost of leakage & Pressure drop	11
Effect of expansion and contraction	12
Using flexible hoses	13
Pipe dia selection	14
Model deriver	15
Products	16-24
ShiftAir presence	25
In house facilities	26
Few of our installation	27



ShiftAir
transmission





ShiftAir
transmission



ABOUT US



ShiftAir Transmission Pvt. Ltd. is a forward-thinking engineering company dedicated to revolutionising the industrial fluid transmission systems. Headquartered at Faridabad in India, ShiftAir has positioned itself as a key player in the compressed air industry with a comprehensive range of **modular aluminum piping systems, compressed air distribution networks and energy-efficient** transmission solutions tailored for the entire length & breadth of industries.

Since our inception we have been consistently delivering value through **cutting-edge technology, robust product design, and customer-first service**, helping industries to minimise energy losses and optimise productivity. Our deep exposure to industries and commitment to quality ensure that our systems perform with precision even in the most challenging environment

CORE SPECIALISATION

ShiftAir provides **end-to-end piping solutions** for compressed air, vacuum, nitrogen, inert gases, and other industrial fluids. Our product range includes:

☒ **Aluminum Piping Systems (20 mm to 250 mm OD)**

Lightweight, corrosion-resistant, and engineered for high flow and low pressure drop. Ideal for closed loop and branch distribution layouts.

☒ **Push-Fit & Clamp-Fit Fittings**

Advanced joint technology that ensures leak-proof connections without welding, threading, or gluing.

☒ **Valves & Accessories**

Full range of isolation valves – Butterfly & Ball Valves , flow meters, pressure regulators, filters and monitoring devices. etc.

☒ **Customised Layout Design Services**

Technically designed systems with layout optimization for minimal bends, proper slope, and calculated pressure drop—using software-based simulations.

☒ **Turnkey Installation Support**

From project planning and site survey to installation and commissioning Shiftair supports clients across every stage of implementation.

TECHNICAL EDGES



- **International Standards Compliance** – Products comply with ISO 8573 -1:2010, ASME B31.1/31.3, and PED-2014/68/EU for piping.
- **High Flow Performance** – Smooth & full bore ensure maximum air flow through pipes
- **Corrosion-Free** – Aluminum piping systems eliminate rust related issues associated with traditional GI/MS pipes.
- **Modularity** – Easily modifiable by utilising the same sets of materials
- **Quick & Clean Installation** – No hot work, reduced downtime, and ready-to-use in over 50% less time than conventional piping.
- **Energy Savings** – Optimized layout design, no leak points, and minimised pressure drop lead to significant cost savings

INDUSTRIES, WE SERVE

We cater to a wide range of industries including:

- **Automotive & Component Manufacturing**
- **Pharmaceuticals & Healthcare**
- **Textiles & Spinning Mills**
- **Food & Beverages**
- **General Engineering & Fabrication**
- **Packaging & Plastics**
- **Electronics & PCB Assembly**
- **Tool Rooms, CNC & Machining Centers**
- **Chemical & Petrochemical Plants**
- **Cement & Construction**
- **Solar and other renewable energy**
- **Quality, Warranty & Commitment**
- **10-Year Warranty** on all aluminum piping and fittings
- **Make-in-India with adherence to global standard compliance**
- **ISO 9001:2015 Certified**
- **Working Pressure up to 15 bar** (burst pressure tested up to 60 bar)

We are committed to deliver **zero-leak** piping systems and have introduced robust **quality checks**, including in-house hydrostatic pressure testing, flow analysis, and air leak detection at every level.

OUR VISION



To become most trusted and technologically advanced provider of compressed air and industrial gas transmission systems.

OUR MISSION

- To innovate and engineer the most efficient piping solutions for various industrial applications
- To support industries in reducing carbon footprints through energy-efficient layouts
- To offer uncompromised after-sales support and consultation

WHY SHIFTAIR ?

- ✓ Widest Range of Piping Sizes (20 mm to 250 mm)
- ✓ Leak-Proof Clamp-Fit Technology
- ✓ Quick Turnaround on Projects
- ✓ Extensive Dealer & Installation Team Network
- ✓ In-House Design & Engineering Team
- ✓ Dedicated Technical Support
- ✓ Worldwide Supply & Delivery Network

ShiftAir Transmission Pvt. Ltd. is not only a supplier but also your solution provider & strategic partner in building efficient sustainable & future-ready pneumatic distribution system.

For customised solutions, layout designs, or technical support, please feel free to reach out to our engineering team.

TECHNICAL PARAMETERS



MATERIAL SPECIFICATIONS

- Pipe : 6063-T5 (Seamless extruded pipes in accordance with EN755.2 EN573.3)
- Fitting Pressure die casting aluminium Grade -A383 Engineered
- Elbow body cast steel (SS304) from 67 to 250 mm
- Valves : Forged brass body ball valve with tempered steel ball (Upto 50 NB)
- Sealing: Cross-linked NBR
- Gripping Ring: Cold worked austenite steel (SS 304)
- Nut & Bolts : High tensile galvanised bolts
- Coating around 80 microns for pipes & around 20 microns for fittings
- Standard Colour Code : RAL5012 for pipes and RAL9004 for fittings
- Pressure Gauge: SS 304 body, conform to EN837-1 with specified accuracy of +/- 1% FSD

SHELF LIFE

Aluminium Alloy Pipes (AL6063-T5) : Aluminum does not have a specified “shelf life” and will not age harden.

Fittings (Die casted aluminium): Aluminum does not have a specified “shelf life” and will not age harden.

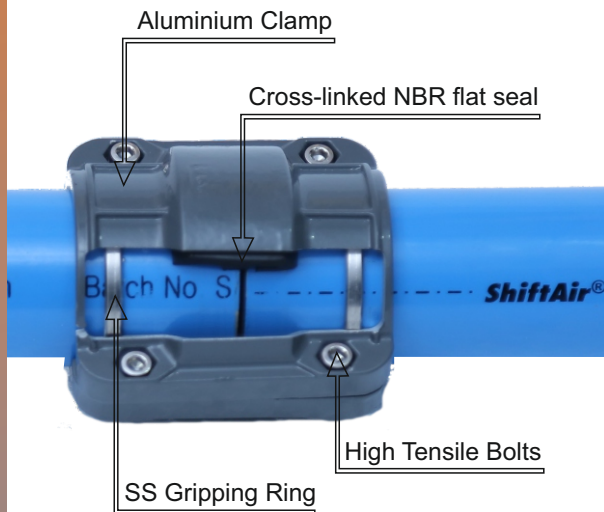
Sealing (Cross Linked NBR) : 15 Years (ISO 2230)

Gripping Ring : 50 Years (Design Life)

Paint (Qualicoat powder coating): 20 Years (Indoor Applications)

ShiftAir offers two types of connection technology as below :

1. From the size 20 mm to 40 mm gripping rings are used to provide the mechanical strength to any joint between two pipes or pipe & fitting .The robustness of the gripping ring ensures against the snipping out of connectors/pipes under pressure.
2. Size 50 mm onwards all joints are prepared through process of cold deformation i.e. grooving. Grooving at the end of pipe ensures higher mechanical strength of the joint so the obvious high reliability



Ring Clamp Connection Technology

(20-40 MM)

- Metal Clampshell union connector quick and easy install and dismantle
- Grab Ring with surface contact no shrinking on inner diameter
- Surface contact, active concentric sealing, leak-free
- Superior reliability and longevity



Lugged Clamp Connection Technology

(67-250 MM)

- Metal Clampshell union connector quick and easy to install and dismantle
- Grab Ring with surface contact no shrinking on inner diameter
- Surface contact, active concentric sealing, leak-free
- Superior reliability and longevity

DESIGN SUPPORT:

ShiftAir provides comprehensive design support to assist clients in selecting the most efficient and reliable compressed air distribution system. Our team evaluates your plant layout, air demand, pressure requirements, and future expansion plans to recommend the ideal pipe sizes, routing, and accessories. We ensure optimal air velocity, minimal pressure drop, and long-term performance using our advanced leak-proof piping solutions. With a focus on safety accuracy, and energy efficiency, ShiftAir aims to deliver designs that enhance productivity and reduce operational costs for every customer.

FLOW CALCULATOR:

ShiftAir's Flow and Diameter Calculator is a crucial design tool for optimising the piping system. It uses system flow rate and length to recommend the pipe diameter that achieves minimal pressure drop.

PROJECT ESTIMATION:

We offer a Project Estimation Service to accurately budget your work. This involves analysing project scope, material needs, labour, and time line to provide a detailed, competitive cost projection. This helps in ensuring proper financial planning and resource allocation.

ENERGY SAVING (ROI) CALCULATOR:

ShiftAir Energy Saving and ROI Calculator is a crucial financial tool. It quantifies the long-term savings to be realised by using their efficient aluminum system over traditional piping. By providing inputs like current pressure drop & leakages and compressor energy costs, the calculator projects the reduced energy consumption due to ShiftAir smooth, leak-proof design. This result is then used to determine the Return on Investment (ROI) time line, showing how quickly the initial investment is recovered through lower utility bills.

QUOTATION SUPPORT:

ShiftAir offers Quotation Support to finalize project costs. After reviewing the system design (including flow rates, diameters, and layout), they provide a detailed Bill of Materials (BOM) and a comprehensive price quote. This ensures the customer receives an accurate, transparent cost split-up covering all necessary aluminum pipe sizes, fittings, and accessories required for the installation.

INSTALLATION GUIDANCE AND TRAINING:

ShiftAir provides full installation guidance and training due to the modular and simplified nature of their aluminum system. They offer on-site support, detailed manuals, and training sessions for client team. This ensures personnel can quickly and correctly assemble the system using the simple push-to-fit or clamping mechanisms, guaranteeing the system remains leak-free and the installation is fast and cost-effective.



ShiftAir hereby declares that it agrees to replace or repair free of cost components which do not perform owing to manufacturing or material defect within 10 years from the date of installation.

The present guarantee is valid provided:

ShiftAir engineers have proper accessibility to examine the products with issue. Materials must operate within the specified / recommended range of working conditions

The guarantee becomes automatically null & void if:

- It puts into operations beyond recommended technical parameters
- Defects being occurred because of mishandling
- Defects caused by product modifications which is not approved by ShiftAir in advance

ShiftAir has a policy of continually develop products and therefore reserves the right to modify any product shown in this catalogue

CERTIFICATIONS



STANDARDS



CERTIFICATIONS



Certificate

Standard: **IATF 16949:2016**

Certificate No.: **01111036620**

Certificate Holder: **ShiftAir Pneumatics**
Plot No. C-1, Sector Colony, Sector-23,
Faridabad - 121005, Haryana, India

Scope: **Manufacture of Fuel and Brake Tube, Flexible Thermal Sleeve, Connectors and HVAC Pipes**

Excluding Product Design

Proof has been furnished by means of an audit that the requirements of IATF 16949:2016 are met.

The certificate is valid from 2018-12-17 until 2021-12-16.

Issue date: **2018-12-17**

Expiry date: **2021-12-16**

Place: **Faridabad**

TÜVRheinland
Precisely Right.

SHREE RAM TESTING LABORATORIES

ISO 9001:2015, ISO 17025:2017 Certified Laboratory

Lab: A-3/103, Sec-6, LPO, Industrial Area, Sector, Greater Noida-201308
Pin: 201308, Greater Noida, Uttar Pradesh, India
Ph: +91-52241151, Fax: +91-52241152, E-mail: info@shreeramtesting.com, www.shreeramtesting.com

TEST REPORT

Report No.: **SR-2018-0001**

Sample Description: **Aluminum Pipe**

Size: **1/2" (12.7mm) OD, 1/4" (6.35mm) ID**

Test Method: **ASME B31.3**

Results:

Sl. No.	Parameter	Unit	Test Method	Result
1.	Bursting Pressure	MPa	ASME B31.3	10.12 (10.12 MPa)

SHREE RAM TESTING LABORATORIES

ATMY ANALYTICAL LABS PVT.LTD.

ISO 9001:2015, ISO 17025:2017 Certified Laboratory

Lab: A-3/103, Sec-6, LPO, Industrial Area, Sector, Greater Noida-201308
Pin: 201308, Greater Noida, Uttar Pradesh, India
Ph: +91-52241151, Fax: +91-52241152, E-mail: info@atmylabs.com, www.atmylabs.com

TEST REPORT

Report No.: **ATMY/2018/0001**

Sample Description: **Aluminum Pipe**

Size: **1/2" (12.7mm) OD, 1/4" (6.35mm) ID**

Test Method: **ASME B31.3**

Results:

Sl. No.	Parameter	Unit	Test Method	Result
1.	Bursting Pressure	MPa	ASME B31.3	10.12 (10.12 MPa)

ATMY ANALYTICAL LABS PVT.LTD.

SGS

Report No.: **SGS/2018/0001**

Sample Description: **Aluminum Pipe**

Size: **1/2" (12.7mm) OD, 1/4" (6.35mm) ID**

Test Method: **ASME B31.3**

Results:

Sl. No.	Parameter	Unit	Test Method	Result
1.	Bursting Pressure	MPa	ASME B31.3	10.12 (10.12 MPa)

SGS

SGS

Report No.: **SGS/2018/0001**

Sample Description: **Aluminum Pipe**

Size: **1/2" (12.7mm) OD, 1/4" (6.35mm) ID**

Test Method: **ASME B31.3**

Results:

Sl. No.	Parameter	Unit	Test Method	Result
1.	Bursting Pressure	MPa	ASME B31.3	10.12 (10.12 MPa)

SGS

NSIC TECHNICAL SERVICES CENTRE, NEENKA

THE NATIONAL INSTITUTE FOR SCIENTIFIC INVESTIGATION LIMITED

Lab: A-3/103, Sec-6, LPO, Industrial Area, Sector, Greater Noida-201308
Pin: 201308, Greater Noida, Uttar Pradesh, India
Ph: +91-52241151, Fax: +91-52241152, E-mail: info@nsic.gov.in, www.nsic.gov.in

TEST REPORT

Report No.: **NSIC/2018/0001**

Sample Description: **Aluminum Pipe**

Size: **1/2" (12.7mm) OD, 1/4" (6.35mm) ID**

Test Method: **ASME B31.3**

Results:

Sl. No.	Parameter	Unit	Test Method	Result
1.	Bursting Pressure	MPa	ASME B31.3	10.12 (10.12 MPa)

NSIC TECHNICAL SERVICES CENTRE, NEENKA

ATMY ANALYTICAL LABS PVT.LTD.

ISO 9001:2015, ISO 17025:2017 Certified Laboratory

Lab: A-3/103, Sec-6, LPO, Industrial Area, Sector, Greater Noida-201308
Pin: 201308, Greater Noida, Uttar Pradesh, India
Ph: +91-52241151, Fax: +91-52241152, E-mail: info@atmylabs.com, www.atmylabs.com

TEST REPORT

Report No.: **ATMY/2018/0001**

Sample Description: **Aluminum Pipe**

Size: **1/2" (12.7mm) OD, 1/4" (6.35mm) ID**

Test Method: **ASME B31.3**

Results:

Sl. No.	Parameter	Unit	Test Method	Result
1.	Bursting Pressure	MPa	ASME B31.3	10.12 (10.12 MPa)

ATMY ANALYTICAL LABS PVT.LTD.

ATMY ANALYTICAL LABS PVT.LTD.

ISO 9001:2015, ISO 17025:2017 Certified Laboratory

Lab: A-3/103, Sec-6, LPO, Industrial Area, Sector, Greater Noida-201308
Pin: 201308, Greater Noida, Uttar Pradesh, India
Ph: +91-52241151, Fax: +91-52241152, E-mail: info@atmylabs.com, www.atmylabs.com

TEST REPORT

Report No.: **ATMY/2018/0001**

Sample Description: **Aluminum Pipe**

Size: **1/2" (12.7mm) OD, 1/4" (6.35mm) ID**

Test Method: **ASME B31.3**

Results:

Sl. No.	Parameter	Unit	Test Method	Result
1.	Bursting Pressure	MPa	ASME B31.3	10.12 (10.12 MPa)

ATMY ANALYTICAL LABS PVT.LTD.

NSIC TECHNICAL SERVICES CENTRE, NEENKA

THE NATIONAL INSTITUTE FOR SCIENTIFIC INVESTIGATION LIMITED

Lab: A-3/103, Sec-6, LPO, Industrial Area, Sector, Greater Noida-201308
Pin: 201308, Greater Noida, Uttar Pradesh, India
Ph: +91-52241151, Fax: +91-52241152, E-mail: info@nsic.gov.in, www.nsic.gov.in

TEST REPORT

Report No.: **NSIC/2018/0001**

Sample Description: **Aluminum Pipe**

Size: **1/2" (12.7mm) OD, 1/4" (6.35mm) ID**

Test Method: **ASME B31.3**

Results:

Sl. No.	Parameter	Unit	Test Method	Result
1.	Bursting Pressure	MPa	ASME B31.3	10.12 (10.12 MPa)

NSIC TECHNICAL SERVICES CENTRE, NEENKA

ATMY ANALYTICAL LABS PVT.LTD.

ISO 9001:2015, ISO 17025:2017 Certified Laboratory

Lab: A-3/103, Sec-6, LPO, Industrial Area, Sector, Greater Noida-201308
Pin: 201308, Greater Noida, Uttar Pradesh, India
Ph: +91-52241151, Fax: +91-52241152, E-mail: info@atmylabs.com, www.atmylabs.com

TEST REPORT

Report No.: **ATMY/2018/0001**

Sample Description: **Aluminum Pipe**

Size: **1/2" (12.7mm) OD, 1/4" (6.35mm) ID**

Test Method: **ASME B31.3**

Results:

Sl. No.	Parameter	Unit	Test Method	Result
1.	Bursting Pressure	MPa	ASME B31.3	10.12 (10.12 MPa)

ATMY ANALYTICAL LABS PVT.LTD.

ATMY ANALYTICAL LABS PVT.LTD.

ISO 9001:2015, ISO 17025:2017 Certified Laboratory

Lab: A-3/103, Sec-6, LPO, Industrial Area, Sector, Greater Noida-201308
Pin: 201308, Greater Noida, Uttar Pradesh, India
Ph: +91-52241151, Fax: +91-52241152, E-mail: info@atmylabs.com, www.atmylabs.com

TEST REPORT

Report No.: **ATMY/2018/0001**

Sample Description: **Aluminum Pipe**

Size: **1/2" (12.7mm) OD, 1/4" (6.35mm) ID**

Test Method: **ASME B31.3**

Results:

Sl. No.	Parameter	Unit	Test Method	Result
1.	Bursting Pressure	MPa	ASME B31.3	10.12 (10.12 MPa)

ATMY ANALYTICAL LABS PVT.LTD.

NSIC TECHNICAL SERVICES CENTRE, NEENKA

THE NATIONAL INSTITUTE FOR SCIENTIFIC INVESTIGATION LIMITED

Lab: A-3/103, Sec-6, LPO, Industrial Area, Sector, Greater Noida-201308
Pin: 201308, Greater Noida, Uttar Pradesh, India
Ph: +91-52241151, Fax: +91-52241152, E-mail: info@nsic.gov.in, www.nsic.gov.in

TEST REPORT

Report No.: **NSIC/2018/0001**

Sample Description: **Aluminum Pipe**

Size: **1/2" (12.7mm) OD, 1/4" (6.35mm) ID**

Test Method: **ASME B31.3**

Results:

Sl. No.	Parameter	Unit	Test Method	Result
1.	Bursting Pressure	MPa	ASME B31.3	10.12 (10.12 MPa)

NSIC TECHNICAL SERVICES CENTRE, NEENKA

LEAKAGE CALCULATION TABLE (Air escaped in SCFM)

LEAKAGE CALCULATION TABLE
(Air escaped in SCFM)

Pressure	Leakage hole size				
(psig)	1/16	1/8	1/4	3/8	1/2
60	4.2	17	68	152	271
70	4.8	19	77	173	307
80	5.4	21	86	193	343
90	5.9	24	95	213	379
100	6.5	26	104	234	415
110	7.1	28	113	254	452
120	7.6	30	122	274	488

For every 0.14 bar decrease in pressure drop
= 1% efficiency increase

eg.- A compressor running at 5.5 bar rather than
6.9 bar would save 10% of electricity cost.

**Air is free,
compressed air isn't**

EFFECT OF EXPANSION AND CONTRACTION DUE TO TEMPERATURE VARIATIONS

Consequences of not properly accounting for thermal variations:

Leakage and system deformation, that in northern & southern cold, could result in a connection separation. Permanent leaks could increase in effectiveness. Risk that the pipes could be out of level and dropped.

1. In order to compensate for the effects of expansion and contraction due to temperature variations, system lengths should be appropriately evaluated and expansion joints installed where needed. *In case of $\Delta T > (^{\circ}\text{C})$ for straight pipeline *.
2. Recommended installations of flexible hoses or expansion loops include but are not limited to:
 - a. The discharge or supply to a drop pipe.
 - b. The middle of a long run of pipe.
 - c. Corners of a piping network.
 - d. At the beginning of a parallel line interval to the pipeline loop.
3. Best practices include but are not limited to:
 - a. All aluminum piping to be installed in strict accordance with ShiftAir installation instructions and specifications.
 - b. Allowing the corners to expand and contract by placing pipe clips an appropriate distance from each corner.
Avoid placing a pipe clip directly in the corner.
 - c. Install drop and tee point at right angles or parallel to building walls.
 - d. Install main header with 1 percent slope downward in directional flow.
 - e. Install drops or tees connectors from top of main header. Provide drain plug at end of each main and sub header at lowest points.
 - f. Allow the appropriate clearances for drilling penetrations of walls, ceilings, and floors as necessary.
 - g. The run of pipe shall allow movement of the pipe to compensate for system expansion and contraction.
 - h. Horizontal and vertical ShiftAir™ piping shall be supported by ShiftAir pipe clips. Supports to be spaced at intervals as described, as required to avoid sag, prevent vibration, and allow accurate leveling or grading.

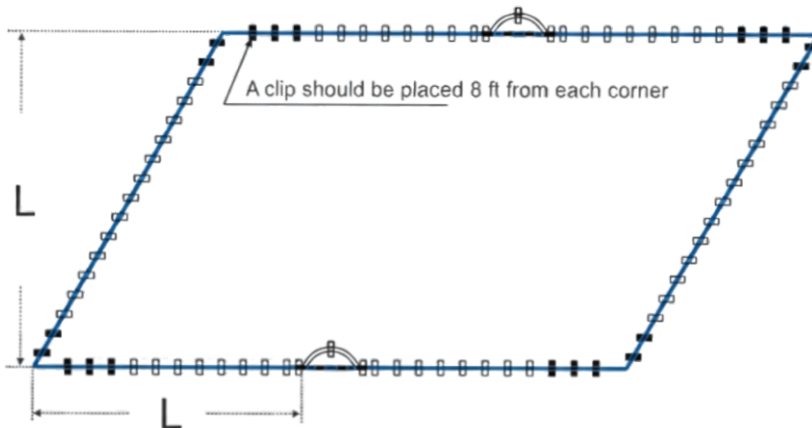
Reference table: Allowable max. installation distance L (meters)

Number	$\Delta T (^{\circ}\text{C})$	DN20	DN25	DN40	DN50	DN63	DN80	DN100	DN150	DN200	DN250
1	20	120	120	120	110	105	95	90	80	75	Consult with ShiftAir
2	25	115	115	115	105	100	90	85	75	70	
3	30	110	110	110	100	95	85	80	70	65	
4	35	100	100	100	90	90	80	75	65	60	
5	40	90	90	90	85	85	75	70	60	55	

EXAMPLES OF USING FLEXIBLE HOSES

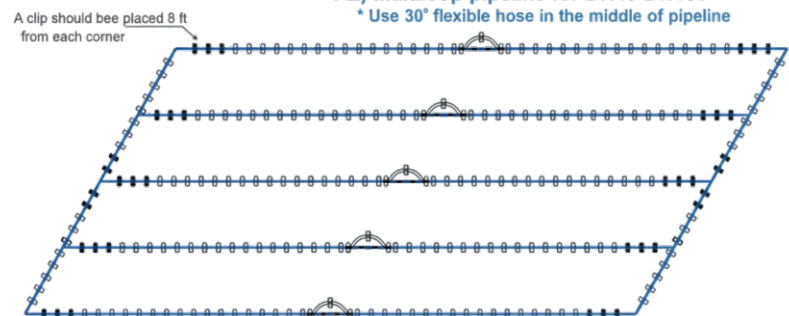
A1) Single loop pipeline for DN40-DN100

* Use 30° flexible hose in the middle of pipeline



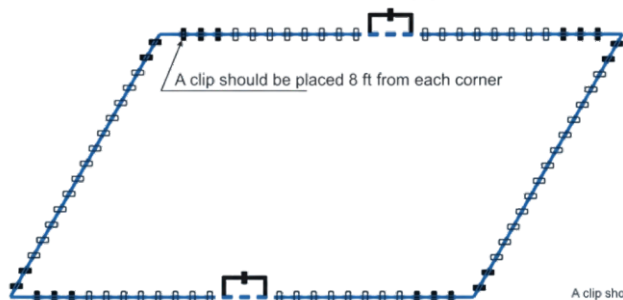
A2) Multiloop pipeline for DN40-DN100

* Use 30° flexible hose in the middle of pipeline



B1) Single loop pipeline for DN150-DN200

* Use two metal hoses in the middle of pipeline



B2) Multiloop pipeline for DN150-DN200

* Use two metal hoses in the middle of pipeline



PIPE DIA SELECTION

Flow		Length in Metre								
CFM	50m	100m	150m	300m	500m	750m	1000m	1300m	1600m	2000m
6	20	20	20	20	20	20	20	25	25	25
18	20	20	20	25	25	25	25	25	25	40
30	20	25	25	25	25	25	40	40	40	40
42	25	25	25	25	40	40	40	40	40	40
60	25	25	25	40	40	40	40	40	40	50
88	25	40	40	40	40	40	40	50	50	50
145	40	40	40	40	50	50	50	50	50	50
205	40	40	40	50	50	50	67	67	67	67
300	40	40	50	50	67	67	67	67	67	67
445	40	50	50	50	67	67	67	84	84	84
590	50	50	67	67	67	84	84	101	101	101
735	50	50	67	67	67	101	101	101	101	101
880	50	67	67	84	84	101	101	101	101	101
1030	67	67	80	84	84	101	101	101	101	153
1175	67	84	84	84	101	101	101	101	153	153
1470	67	84	84	84	101	101	101	153	153	153
1760	84	84	84	101	101	153	153	153	153	153
2050	84	84	101	101	153	153	153	153	153	153
2355	84	101	101	101	153	153	153	153	153	153
2650	84	101	101	153	153	153	153	153	153	153
2940	84	101	101	153	153	153	153	153	153	153
3235	101	101	101	153	153	153	153	153	153	153
3530	101	101	153	153	153	153	153	153	153	153
3825	153	153	153	153	153	153	153	153	153	205
4240	153	153	153	153	153	153	153	205	205	205
4710	205	205	205	205	205	205	205	205	205	205
5000	205	205	205	205	205	205	205	205	205	205
5890	205	205	205	205	205	205	205	205	205	205
7065	205	205	205	205	205	205	205	205	205	205

- For 250mm Size, Consult with ShiftAir Team
- Calculated at 8 bar pressure considering closed loop system

In addition to total pipe length calculated, we need to consider the equivalent length of follwing valves/ connectors to correctly select diameter or piping network

Type of Fittings						
Pipe Size	Elbow	Tee	Branch Tee	Ball/Butterfly valve	Check valve	Reducing Connector
20	0.25	0.35	1.2	0.2	1.5	0.35
25	0.4	0.5	1.5	0.3	2	0.5
40	0.6	0.8	2.4	0.5	3.2	0.7
50	0.8	1	3	0.6	4	1
67	1	1.3	4	0.8	5.2	1.5
84	1.3	1.6	4.8	1	6.4	2
101	1.6	2	6	1.3	8	2.5
153	2.4	3	9	1.9	12	3.6
205	3.2	4	12	2.6	16	4.8

HOW TO IDENTIFY THE ITEM FROM PART CODES



ITEM TYPE:

AP- Aluminium Pipe
 EC- Equal Connector
 UC- Unequal Connector
 EP- End Cap
 EE- Equal Elbow
 ET- Equal Tee
 ME- Male Elbow
 RT- Reducing Tee
 MS- Male Stud
 QA- Quick Assembly Bracket
 TD- Threaded Drop
 QV- Quick Push-in Valve
 DV- Double Port Female Valve
 SV- Single Port Female Valve
 BV- Ball Valve
 FV- Flanged Butterfly Valve
 EF- Aluminium Flange Connector
 FC- Fixing Clip
 MB- Cantilever Mounting Bracket
 TB- Triangular Mounting Bracket
 GC- Girder Clamp
 AB- Allen Bolt
 TR- Threaded Drop
 PC Pipe Cutter
 HD- Hole Deburring Tool
 PG- Pressure Gauge
 PD- Pipe Deburring Tool
 ML- Manual Lugging Machine

PRIMARY SIZE: Pipes & Fittings:

20- 20.1 MM
 25- 25.1 MM
 40- 40.1 MM
 50- 50.1 MM
 67- 67.6 MM
 84- 84.8 MM
 A1- 101.8 MM
 A2- 153 MM
 A3- 205 MM
 A4- 250 MM
Threaded Valves
 21- 1/2" BSP
 27- 3/4" BSP
 34- 1" BSP
 42- 1.1/4" BSP
 49- 1.1/2" BSP
 48- 2" BSP
 46- 3" BSP
 47- 2.1/2" BSP
Bracket & Accessories
 03- 300 MM
 05- 500 MM
 08- 800 MM
 12- 1200 MM

SECONDARY SIZE: Pipes & Fittings:

06 - 6 Mtr. Length
 03- 3 Mtr. Length
 20- 20.1 MM
 25- 25.1 MM
 40- 40.1 MM
 50- 50.1 MM
 67- 67.6 MM
 84- 84.8 MM
 A1- 101.8 MM
 A2- 153 MM
 A3- 205 MM
 90- 90° Angle
 45- 45° Angle

Threaded Fittings & Valves

21- 1/2" BSP
 27- 3/4" BSP
 34- 1" BSP
 42- 1.1/4" BSP
 49- 1.1/2" BSP
 48- 2" BSP
 47- 2.1/2" BSP
 46- 3" BSP
 FF- Female Thread

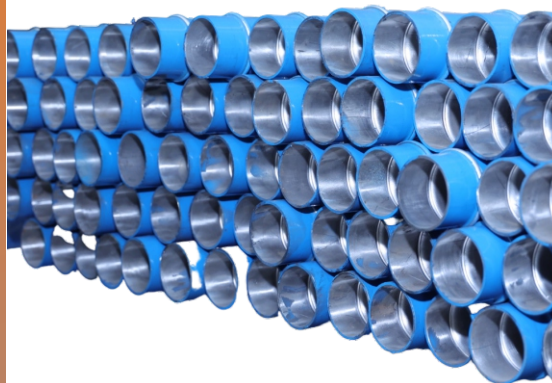
Bracket & Accessories

03- 300 MM
 05- 500 MM
 08- 800 MM
 12- 1200 MM

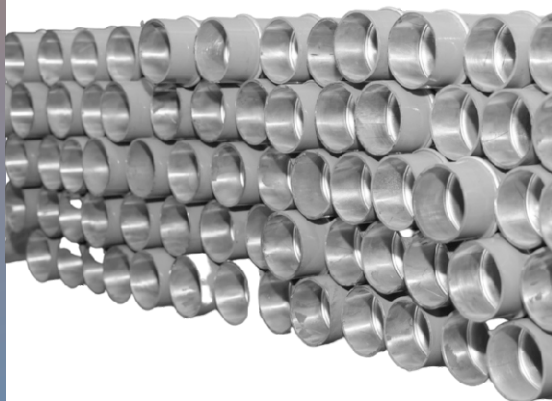
COLOR CODE & MATERIAL:

00- Blue
 01- Grey/Black
 02- Nickel Plated
 MS- Mild Steel
 SS- Stainless Steel
 CI- Cast Iron
 PL- Plastic
 MT- Metallic

PRODUCTS



Aluminium Alloy Blue Pipe	Part Code	Outer Dia.	Inner Dia.	Length (mm)
	AP 20 06 00	20.1	17.5	6000
	AP 20 03 00	20.1	17.5	3000
	AP 25 06 00	25.1	22.5	6000
	AP 25 03 00	25.1	22.5	3000
	AP 40 06 00	40.1	36.5	6000
	AP 40 03 00	40.1	36.5	3000
	AP 50 06 00	50.1	45.7	6000
	AP 50 03 00	50.1	45.7	3000
	AP 67 06 00	67.6	63	6000
	AP 67 03 00	67.6	63	3000
	AP 84 06 00	84.8	80	6000
	AP 84 03 00	84.8	80	3000
	AP A1 06 00	101.8	96.8	6000
	AP A1 03 00	101.8	96.8	3000
	AP A2 06 00	153	147	6000
	AP A2 03 00	153	147	3000
	AP A3 06 00	205	197.8	6000
	AP A3 03 00	205	197.8	3000
	AP A4 03 00	250	240	3000
	AP A4 06 00	250	240	6000



Aluminium Alloy Grey Pipe	Part Code	Outer Dia.	Inner Dia.	Length(mm)
	AP 20 06 01	20.1	17.5	6000
	AP 20 03 01	20.1	17.5	3000
	AP 25 06 01	25.1	22.5	6000
	AP 25 03 01	25.1	22.5	3000
	AP 40 06 01	40.1	36.5	6000
	AP 40 03 01	40.1	36.5	3000
	AP 50 06 01	50.1	45.7	6000
	AP 50 03 01	50.1	45.7	3000
	AP 67 06 01	67.6	63	6000
	AP 67 03 01	67.6	63	3000
	AP 84 06 01	84.8	80	6000
	AP 84 03 01	84.8	80	3000
	AP A1 06 01	101.8	96.8	6000
	AP A1 03 01	101.8	96.8	3000
	AP A2 06 01	153	147.5	6000
	AP A2 03 01	153	147.5	3000
	AP A3 06 01	205	197.8	6000
	AP A3 03 01	205	197.8	3000
	AP A4 06 01	250	240	6000
	AP A4 03 01	250	240	3000

PRODUCTS



Equal Connector



Part Code Size

EC 20 00 01	20
EC 25 00 01	25
EC 40 00 01	40
EC 50 00 01	50
EC 67 00 01	67
EC 84 00 01	84
EC A1 00 01	100
EC A2 00 01	150
EC A3 00 01	200
EC A4 00 01	250

Unequal Connector



Part Code Size

UC 25 20 01	25 X 20
UC 40 25 01	40 X 25
UC 50 25 01	50 X 25
UC 50 40 01	50 X 40
UC 67 40 01	67 X 40
UC 67 50 01	67 X 50
UC 84 50 01	84 X 50
UC 84 67 01	84 X 67
UC A1 67 01	100 X 67
UC A1 84 01	100 X 84
UC A2 84 01	150 X 84
UC A2 A1 01	150 X 100
UC A3 A2 01	200 X 150
UC A4 A3 01	250 X 150

Aluminium Flange Connector



Part Code Size

EF 67 00 01	67
EF 84 00 01	84
EF A1 00 01	100
EF A2 00 01	150
EF A3 00 01	200
EF A4 00 01	250

**all dimensions are in mm*

PRODUCTS



Equal Elbow 90



Part Code	Size
EE 20 90 01	20
EE 25 90 01	25
EE 40 90 01	40
EE 50 90 01	50
EE 67 90 01	67
EE 84 90 01	84
EE A1 00 01	100
EE A2 00 01	150
EE A3 00 01	200
EE A4 00 01	250

Male Threaded Elbow (Complete)



Part Code	Size
ME 20 21 01	20
ME 20 27 01	20
ME 25 21 01	25
ME 25 27 01	25
ME 25 34 01	25
ME 40 34 01	40
ME 40 42 01	40
ME 40 49 01	40
ME 50 49 01	50
ME 50 48 01	50
ME 67 48 01	67
ME 67 47 01	67
ME 84 47 01	84
ME 84 46 01	84

End Cap



Part Code	Size
EP 20 00 01	20
EP 25 00 01	25
EP 40 00 01	40
EP 50 00 01	50
EP 67 00 01	67
EP 84 00 01	84
EP A1 00 01	100
EP A2 00 01	150
EP A3 00 01	200
EP A4 00 01	250

**all dimensions are in mm*

PRODUCTS



Male Stud Fittings



Part Code	Size
MS 20 21 01	20
MS 20 27 01	20
MS 25 21 01	25
MS 25 27 01	25
MS 25 34 01	25
MS 40 34 01	40
MS 40 42 01	40
MS 40 49 01	40
MS 50 49 01	50
MS 50 48 01	50
MS 67 47 01	67
MS 67 48 01	67
MS 84 47 01	84
MS 84 46 01	84

Complete fitting upto 100 mm

Female Stud Fittings



Part Code	Size
FS 20 21 01	20
FS20 27 01	20
FS25 21 01	25
FS25 27 01	25
FS25 34 01	25
FS40 34 01	40
FS40 42 01	40
FS40 49 01	40
FS50 49 01	50
FS50 48 01	50
FS67 47 01	67
FS67 48 01	67
FS84 47 01	84
FS84 46 01	84

Flanged Butterfly Valve



Part Code	Size
FV 67 CI 02	67
FV 67 SS 02	67
FV 84 CI 02	84
FV 84 SS 02	84
FV A1 CI 02	100
FV A1 SS 02	100
FV A2 CI 02	150
FV A2 SS 02	150
FV A3 CI 02	200
FV A3 SS 02	200
FV A4 CI 02	250
FV A4 SS 02	250

PRODUCTS



Equal Tee



Part Code	Size
ET 20 00 01	20
ET 25 00 01	25
ET 40 00 01	40
ET 50 00 01	50
ET 67 00 01	67
ET 84 00 01	84
ET A1 00 01	100
ET A2 00 01	150
ET A3 00 01	200
ET A4 00 01	250

Reducing Tee



Part Code	Diameter
RT 25 20 01	25 X 20
RT 40 25 01	40 X 25
RT 50 40 01	50 X 40
RT 67 40 01	67 X 40
RT 67 50 01	67 X 50
RT 84 50 01	84 X 50
RT 84 67 01	84 X 67
RT A1 50 01	100 X 50
RT A1 67 01	100 X 67
RT A1 84 01	100 X 84
RT A2 67 01	150 X 67
RT A2 84 01	150 X 84
RT A2 A1 01	150 X 100
RT A3 67 01	200 X 67
RT A3 84 01	200 X 84
RT A3 A1 01	200 X 100
RT A3 A2 01	200 X 150
RT A4 A3 01	250 X 200

Complete fitting upto 100 mm

Pressure Gauge



Part Code	Size
PG A1 21 02	100
PG A2 21 02	150

PRODUCTS



Quick Assembly U- Bracket



Part Code	Size
QA 25 20 01	25 X 20
QA 40 20 01	40 X 20
QA 40 25 01	40 X 25
QA 50 20 01	50 X 20
QA 50 25 01	50 X 25
QA 67 20 01	67 X 20
QA 67 25 01	67 X 25
QA 84 20 01	84 X 20
QA 84 25 01	85 X 25
QA A1 20 01	100 X 20
QA A1 25 01	100 X 25
QA A2 20 01	150 X 20
QA A2 25 01	150 X 25
QA A3 20 01	200 X 20
QA A3 25 01	200 X 25
QA A4 20 01	250 X 20
QA A4 25 01	250 X 25

Quick Assembly Straight Bracket



Part Code	Size
QA A1 40 01	100X 40
QA A2 40 01	150 X 40
QA A2 50 01	150 X 50
QA A3 40 01	200 X 40
QA A3 50 01	200 X 50

Female Threaded Bracket



Part Code	Size
TD 25 21 01	20
TD 40 21 01	40
TD 50 21 01	50
TD 67 21 01	67
TD 84 21 01	84
TD A1 21 01	100

PRODUCTS



Quick Push-In Ball Valve



Part Code **Size**

QV 20 00 01	20
QV 25 00 01	25
QV 40 00 01	40
QV 50 00 01	50
QV 67 00 01	67
QV 84 00 01	84

Single Port Female Ball Valve



Part Code **Size**

SV 20 21 01	20
SV 25 21 01	25
SV 25 34 01	25
SV 40 49 01	40
SV 50 48 01	50

Double Port Female Ball Valve



Part Code **Size**

DV 20 21 01	20 X 1/2"
DV 25 21 01	25 X 1/2"
SV 25 34 01	25 X 1"

Brass Ball Valve



Part Code **Size**

BV 21 FF 02	1/2"
BV 27 FF 02	3/4"
BV 34 FF 02	1"
BV 42 FF 02	1-1/4"
BV 49 FF 02	1-1/2"
BV 48 FF 02	2"
BV 21 MF 02	M/F 1/2"

**all dimensions are in mm*

PRODUCTS



Fixing Clamp



Part Code	Size
FC 20 00 PL	20
FC 20 00 MS	20
FC 25 00 PL	25
FC 25 00 MS	25
FC 40 00 PL	40
FC 40 00 MS	40
FC 50 00 PL	50
FC 50 00 MS	50
FC 67 00 PL	67
FC 67 00 MS	67
FC 84 00 PL	84
FC 84 00 MS	84
FC A1 00 PL	100
FC A1 00 MS	100
FC A2 00 MS	150
FC A3 00 MS	200
FC A4 00 MS	250

L- Bracket



Part Code	Size
LB 01 01 MS	150 X 150
LB 02 02 MS	200 X 200
LB 10 10 MS	250 X 250
LB 03 03 MS	300 X 300

Beam Clamp



Part Code	Size
GC 08 00 MS	8 MM
GC 10 00 MS	10 MM

Manual Lugging Machine



Part Code	Dia.
ML 50 00 01	50
ML 67 A3 01	67-200
ML A4 00 01	250

**all dimensions are in mm*

PRODUCTS



Threaded Rod

Part Code	Size
TR 30 08 MS	M8X3000
TR 30 10 MS	M10X3000



Pipe Deburring tool

Part Code	Size
PD 50 20 00	DN20–DN50



Pipe Cutter

Part Code	Size
PC 67 20 00	20–67mm
PC A1 40 00	40–110mm



Drill Holder

Part Code	Size
DH 14 30 00	DN25
DH 32 A2 00	DN25–DN200



Hole Deburring tool

Part Code	Size
HD 16 00 00	20–205



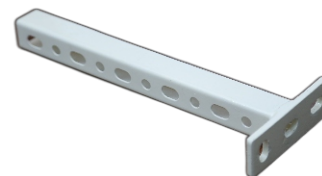
Pipe Marker

Part Code	Size
PM A1 25 00	DN25–DN100



Hole Saw Cutter

Part Code	Size
HC 16 00 00	16 mm
HC 19 00 00	19 mm
HC 22 00 00	22 mm
HC 25 00 00	25 mm
HC 38 00 00	38 mm
HC 51 00 00	51 mm

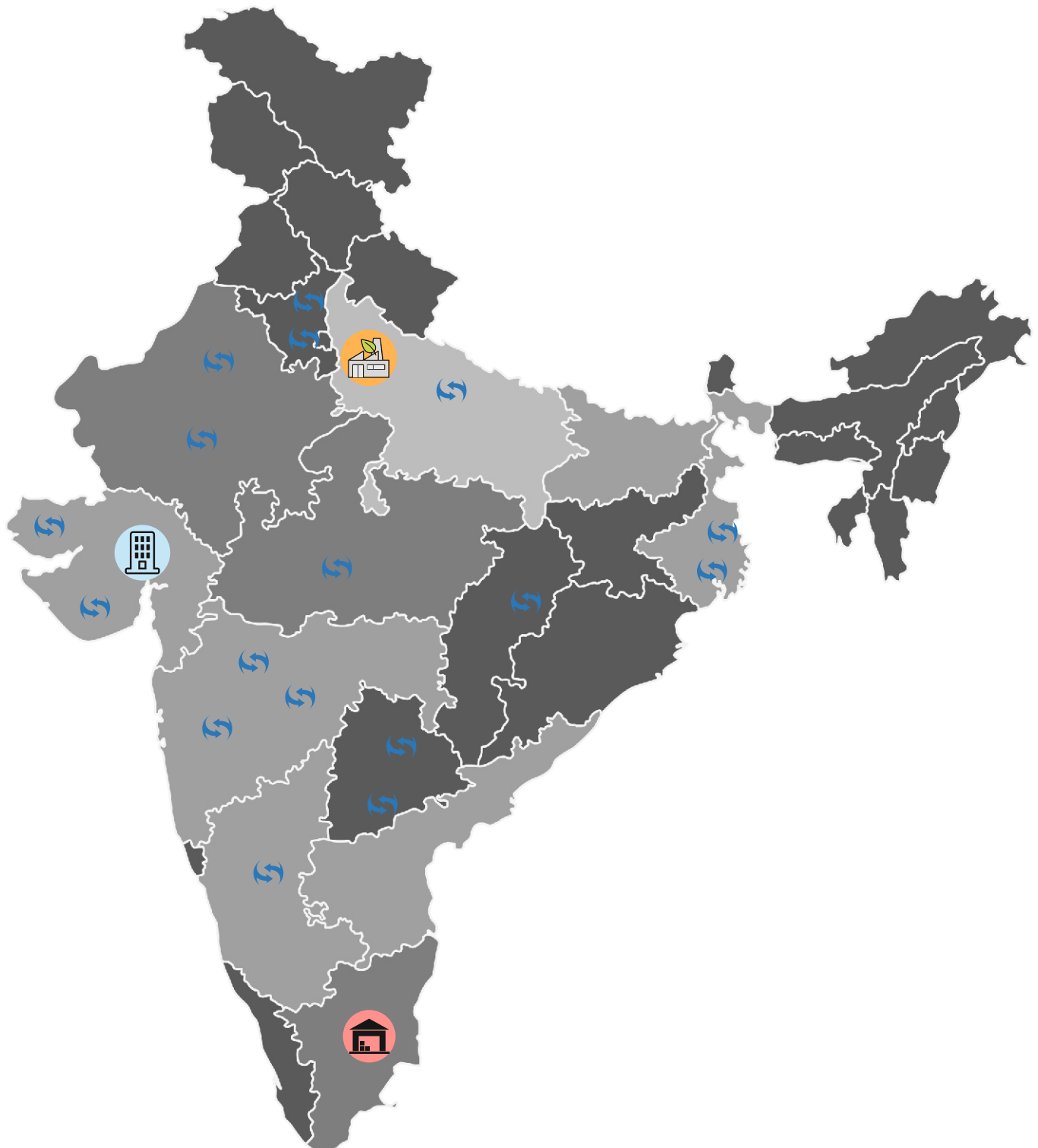





Cantilever Mounting Bracket

Part Code	Size
MB 03 00 MS	300
MB 05 00 MS	500
MB 08 00 MS	800
MB 12 00 MS	1200

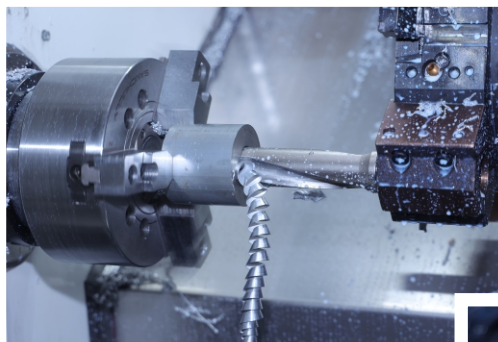
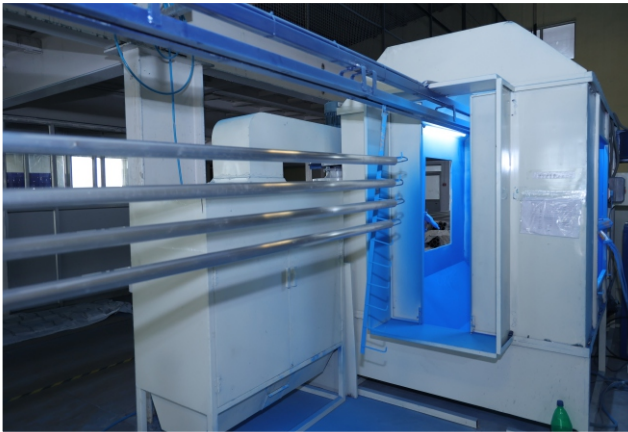
**all dimensions are in mm*

OUR PRESENCE IN INDIA

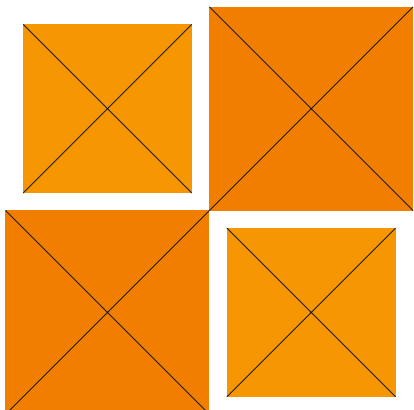
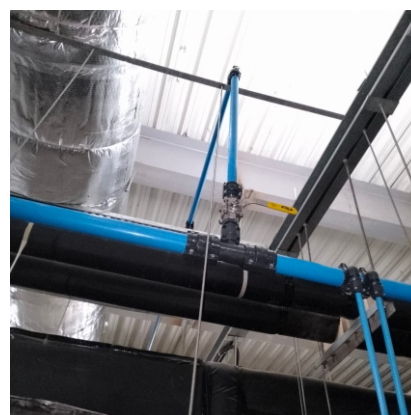


-  **FACTORY**
-  **OFFICE**
-  **WARE HOUSE**

IN HOUSE FACILITIES



FEW OF OUR INSTALLATION





ShiftAir Transmission Pvt. Ltd.



Scan to download this
catalogue in soft copy

Head Office:

1F10-11, Ozone Centre, Sector-12,
Faridabad- 121007, Haryana, India

Contact no. : +91-129-4177575

Branch Office:

SF-7, 2nd Floor, Unique Metropolis Near Prasang Party,
Plot Opp. Sola Bhagawant Vidyapith, R.C. Technical Road,
Gota, Ahmedabad - 382421

Contact no. : +91-79-35780909

Factory:

Plot No.-110, 119, Sector-68, IMT,
Faridabad-121006, Haryana, India

Warehouse

2/607F, Lakshmi Nagar Malumichampatti,
Coimbatore-641050, Tamilnadu

Contact no. : +91-9311666570

Email: sales@shiftairindia.com

Follow us

